





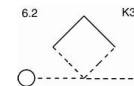
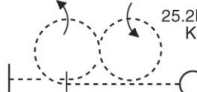
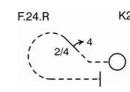
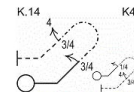
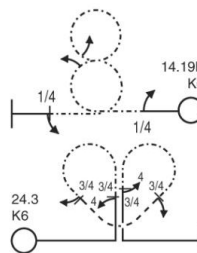
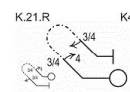
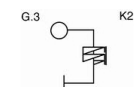
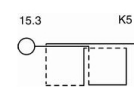
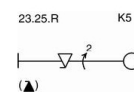
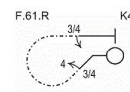
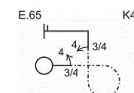
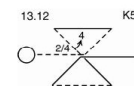
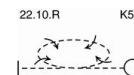
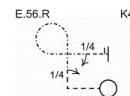
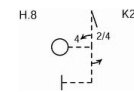
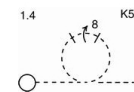




2016 AMA Nat's F3A Unknown 1

| | | | |
|----|---|---|-----|
| 1 | Loop with 8-point roll (from bottom) inverted entry | U  | K=5 |
| 2 | Stall turn, 2 of 4 point roll up, half roll down, inverted entry |  | K=2 |
| 3 | Rolling circle with 4 rolls inside, inverted entry | D  | K=5 |
| 4 | Figure 9 from bottom inverted with quarter roll up, 3 quarter knife edge loop, quarter roll, exit inverted |  | K=4 |
| 5 | Hourglass (middle entry, top first) 2 of 4 point roll down, inverted entry | U | K=5 |
| 6 | Figure 6 from middle upright with 3 consecutive quarter rolls , 3 quarter knife edge loop, 3 consecutive quarter rolls, exit upright | | K=4 |
| 7 | 2 of 2 point roll, full snap roll opposite | D | K=5 |
| 8 | Half reverse cuban eight from top upright with 3 consecutive quarter rolls, 5 eighths knife edge loop, 3 quarter roll, exit upright | | K=4 |
| 9 | Square horizontal eight (from top) | U | K=5 |
| 10 | 2 and 1 half turn spin | | K=2 |
| 11 | Vertical knife-edge eight with two half roll | D | K=6 |
| 12 | 45 degree up-line from upright, three consecutive quarter rolls, knife-edge half loop (up or down), 3 quarter roll down, exit upright | | K=4 |
| 13 | Double key: pull into a vertical upline, 3 of 4 point roll up, 5 eighths knife-edge loop towards the back, 3 quarter roll down, push into a 45 degree upline, 3 quarter roll up, 5 eighths knife-edge loop towards the back, 3 of 4 point roll down, pull to exit upright | U | K=6 |
| 14 | 45 degree up-line from upright, 3 quarter roll, knife-edge half loop (up or down), three consecutive quarter rolls down, exit inverted |  | K=4 |
| 15 | Horizontal eight with one roll integrated in each loop, inverted entry and exit | D  | K=6 |



If you appreciate convenient unknowns, consider donating to keep the service running: <http://paypal.me/patternscoring>

| | | | |
|----|---|---|------|
| 16 | Half reverse cuban eight, 2 of 4 point roll, inverted entry |  | K=2 |
| 17 | Square loop on corner, inverted entry | U  | K=3 |
| | | | K=72 |